



The Bay Run



Newsletter of
The Delaware Bay Lighthouse Keepers
and Friends Association, Inc.

*"Our mission is to preserve the history of the
Delaware Bay and River Lighthouses, Lightships and their Keepers"*

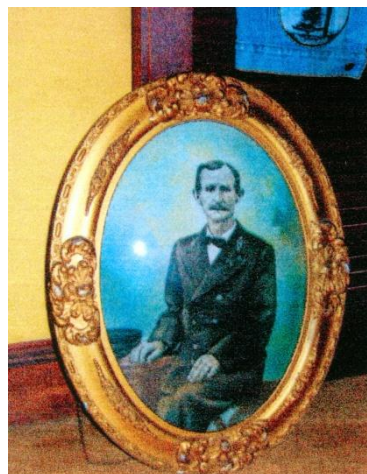
Volume 9 Issue 3

Fall 2009

"The Lighthouse Keeper"

AARON KIMMEY

Long Time Keeper
of many Lighthouse
from 1906 to 1927
His history as related by
Great Grandson Ernie Mabrey
To "Delware Lighthouse lady"
Linda peirson DBLHKFA memeber
(See stroy on page 4)



MEMORIAL TRIBUTES TO Carole F Reily and Jim Growdy

**Founder and President
Delaware Bay Lighthouse
Keepers and Friends Association
1995 to July 6th 2007**



**Lighthouse Historian and Editor
Author of the "Guiding Lights of the
Delaware River and Bay" one of
the founders of the NJLHS**



In This Issue:

- 1- Historic Keeper and our Memorial Tribute
- 2- Beam from the President's Desk List of Officers
- 3- Log of the VP--Bill Bart- Membership Update
- 4- Historic Life of Keeper Aaron Kimmey

- 5- Seaway Trail Lighthouse Tour-by Rod Mulligan
- 6- Peggy's Corner- Remembering Carole & Jim
- 7- Keeper Con't- List of Keepers from Carole
- 8- Annual Picnic Cruise-More of Rod's Lighthouses

The Bay Run

A BEAM From The Presidents Desk By Angelo S. Rigazio, Jr.



President's message

Well, hello to everyone at DBLHKFA. The summer season is over and our last Cruise to see the Delaware Bay Lighthouses was held on August 23rd. I hope you all had a good time on all of these cruises. We only had to cancel one trip and that was due to inclement weather. Even though the first cruise was not sold out we still sailed out to sea. The rest of our trips did sell out. If you haven't been on one of our cruises, you should try one next year. It's a great way to spend some time on the Bay seeing the lighthouses really up close. It's a great opportunity to take pictures that are special additions to your lighthouse collection. I have been frequently asked what it was like to live on the lighthouse, when you could see it was so isolated. My answer was, you had to get along with the other Coast Guardsman on the light or it could be a long two weeks.

Lets not forget the upcoming events this fall, such as the New Jersey 10th Anniversary Lighthouse Challenge and our Annual Banquet/Reunion at the Yacht Club of Sea Isle City. Our theme for the banquet is remembering Carole and what she meant to you. I am asking all members of DBLHKFA who can, to come out and support your organization. So come out and have a good time with us. It's really more than a terrific meal, it's time with fellow lighthouse enthusiasts. Remember, our organization can only be as strong as our members active participation

"Keep the Lights Shining"

Angelo

We would like to see some new members and greater membership participation. We are a great organization

THE BAY RUN is the official publication of The Delaware Bay Lighthouse Keepers and Friends Association, Inc. and is published quarterly throughout the year. A subscription to the newsletter is included with the cost of membership.

Membership dues are \$15.00 single and \$20.00 family and are for the calendar year beginning March 1st.

Back issues are usually available for members joining mid-year. Materials are copyrighted and may not be reproduced without permission of the DBLHKFA, Inc.

For Newsletter Ideas, Contact

DBLHKFA c/o Maxine Mulligan

1049 Simca Terr., Vineland, NJ 08360
E-Mail – Memax1@juno.com

The DBLHKFA, Inc. Officers and Directors

President..... Angelo S. Rigazio, Jr.
Vice President..... Gaylord F (Dusty) Pierce
Chairman of the Board.....Rod Mulligan
Treasurer.....Maxine Mulligan
Secretary.....Darlene Rigazio
Membership.....Sharon Hewitt
Activities/Programs.....Peggy Stapleford
Sunshine/Hospitality.....Martha Ruddick
Publicity.....Jean Jones
Historian.....Peggy Stapleford
Ways and Means Anthony Giletto
Newsletter.....Jim Moffatt, Maxine Mulligan
Webmaster.....Kelly Mulligan
Scholarship Committee.....Anthony Giletto

Board of Directors

Rod Mulligan, Bill Geilfuss, Tony Giletto
Steve Hewitt and Fred Ruddick

Phone Numbers and E-Mail Addresses

A. Rigazio	(609) 884-1329	Keeperang54@yahoo.com
G.F. Pierce	(302) 684-3512	overfalls@juno.com
R & M Mulligan	(856) 691-8224	Memax1@juno.com
J Jones	(856) 825-3386	jeanjones@fast.net
S & S Hewitt	(856) 456-4484	Baron101@verizon.net
F & M Ruddick	(609) 927-1781	MRuddick44@comcast.net
Bill Geilfuss	(732)-477-7768	billyrio@aol.com
D. Rigazio	(609) 884-1329	Darlenej50@yahoo.com
P Stapleford	484-947-3191	mspegstapleford@dejazzd.com
Jim Moffatt	(856)691-0201	JamesMoffatt@comcast.net
Tony Giletto	(856)482-8874	Nino21328@aol.com
K. Mulligan	(856)-691-8224	Kelly@delawarebaylightkeeperfriend.org

The Delaware Bay Lighthouse Keepers and Friends Association, Inc. (DBLHKFA) is a 501(c)(3) non-profit preservation and educational organization.

The Bay Run

From The Log

of the

Vice President

Gaylord F.(Dusty) Pierce



Here it is fall already!! Where did the summer go? We had a great picnic/meeting/cruise aboard the Bonanza II on Sunday July 19th, Capt. Joe Ronketty, Jr. anchored the Bonanza II off Ship John Shoal Lighthouse in the Delaware Bay. What a quiet, serene, beautiful place to hold a meeting. After taking care of business at hand and partaking of the delicious “lighthouse” cupcakes, we sailed southward on the Bay to visit the other lighthouses. It was a delightful experience. Something different.

Our last cruise for the season took place on Sunday, August 23rd. We held our breath to see what Hurricane Bill had in store for the Delaware Valley and the Bay. Our prayers were answered as it turned out to be a beautiful, sunny day and the cruise got underway. My thanks to Captains Joe Ronketty, Sr, Joe Ronketty, Jr. and Mike Rothman and all of the volunteers who make these cruises so successful.

Peggy Stapleford has done a great job in organizing our group’s many events. We certainly have a lot to look forward to. Coming up in October is the NJLHS Challenge Weekend on the 17th and 18th when we will be setting up a table at Hereford Inlet. We need volunteers as always; please contact Peggy Stapleford or Angelo Rigazio if you can help out for a few hours, it is an exciting day meeting and talking with hundreds of lighthouse enthusiasts.

On October 25th is our annual banquet/reunion meeting at the Yacht Club of Sea Isle City
SEE THE ENCLOSED RESERVATION FORM
Looking forward to seeing you there!

Passed Over the Bar

Lt. Commander Bill Bart

Base Commander at Cape May

Bill’s Family is inviting those who knew him to his Service.

Burial at Sea and Wake on

October 14th 2009

Please contact his daughter immediately as you receive this notice at (609) 889-7919.

She will need your name as it appears on your driver's license for security purposes at Cape May Base.

Our Current Membership

98 Family Members

36 Single Members

4 Honorary Members

Total Membership 138

Mailings of the “BAY RUN” our quarterly newsletters are mailed to each membership at a single address. Considering the low price of our membership we must keep our expenses at a minimum. Printing, envelopes and postage are constantly increasing Thanks for your help.

Have you invited anyone to join our great Delaware Bay Lighthouse Keepers and Friends Association lately?

We offer so much for so little...

Great Programs 4 times a year. Two General Meetings at outstanding locations The Annual Picnic always great fun and the spectacular Reunion Banquet to round out our year

It takes so little to ask some one

We have brochures and extra copies of the “Bay Run” available for recruiting new members

Contact any officer.

The Bay Run

THE LIGHTHOUSE KEEPER

AARON KIMMEY A Life Story

by Linda Peirson and Ernie Mabrey

On February 6, 2009 Peggy Stapleford and I went to visit Louise Krumple Boyd. There we learned the story of Aaron Kimmey, Louise's husband's grandfather, who was a Lighthouse Keeper and he was also stationed on a Lightship. She gave us the picture of him in his lighthouse uniform.



Louise Krumple Boyd Pix of Keeper Kimmey
With the help of Ernie Mabrey Aaron Kimmey's great grandson we can relate the story of Keeper Kimmey.

He was born on April 10th 1867 in Georgetown, DE. With only an 8th grade education he was a farmer, laborer, tinsmith and carpenter. His lighthouse career included cook and deckhand on the Lightship LV52 at Fenwick Island Shoal Feb. 1906 to August 1906. Acting as 2nd assistant keeper, he was stationed at Brandywine Shoal Lighthouse for two months and then on to Egg Island Lighthouse as acting keeper from November 1906 to January 1907 returning to Brandywine Shoal in March '07. After remaining at Brandywine until November 1909, he once again returned to Egg Island as keeper until 1911.

(Note: Egg Island Lighthouse had more keepers than any other lighthouse on Delaware River or Bay main reason being the hoards of mosquitoes in the area.) His wife Annie, and their daughters could have lived there but decided to live in town to enable the girls to go to school; this way they didn't have to contend with the bugs plus it was too far to walk through the marshes. They would venture out to Egg Island for the summer.

Keeper Kimmey & wife Annie at Reedy Island Rear Lighthouse



Kimmey was then transferred to Reedy Island Front Range Light for a month and then to Reedy Point Rear Range Light where he served as keeper for 16 years until 1927. When stationed at Reedy Island Front, it was a 4 ½ mile walk for his daughters, with one mile across the marshes. Keeper Kimmey heard that Mr. Stellar Keeper

of Reedy Island Rear Range was resigning. In a letter to his commander in Philadelphia he requested a transfer: "I have the honor to say that I have been to this station and have been informed that Mr. Stellar is going to resign and if such be the case I would be pleased to have the station as it is close to the school." He got the job as Keeper at Reedy Island Rear Range where he remained until January 12th 1927 when he died in the keepers house.

Annie Kimmey requested the widow's pension in 1929 and was told there was none. She died in 1964.

Ernie Mabrey told us that as a boy, he did yard work for Mrs. Herbert, the lady who purchased Liston Front Range Lighthouse in 1954. It seems Mrs. Herbert didn't like it when the coast guard took the lens out of the lighthouse before it was sold and she let it be known. When the lens was no longer needed, the coast guard returned it but didn't replace it in the tower. Ernie's family helped put it back where it belonged. Some of us have had the good fortune of seeing the lens in the tower at Liston Front Range.

When Reedy Island new Range Light was built in 1909, a lens was needed. There was a 5th Order Lens that had just been taken out of service and needed a home. It found a home at the new Reedy Island Rear Range Light and the old lens was once again homeless. Again the coast guard gave the light to Mrs. Herbert. In doing research in Dover, DE, I found information that stated a 5th

Continue on page 7

The Bay Run

NJLHS SEAWAY TRAIL LIGHTHOUSE TOUR

June 7th to 12th 2009

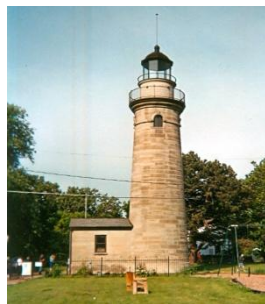
By Rod Mulligan

Trolley Tours bus left Newark, NJ at 0700, June 7th. At the Penn Statler Hotel on the grounds of Penn State University, we were served a delicious lunch. On to Erie, PA. For an overnight stay at the Clarion Bel-Aire Motel, just in time to prepare for another meal. I have a feeling that this trip is going to be a tossup between a eating marathon and a lighthouse expedition and both sounded good. to me!!!

“Welcome to the Seaway Trail and its historic lighthouses. This trail, 504 miles long, follows four major water ways in upstate New York and Pennsylvania...Lake Erie, the Niagara River, Lake Ontario and the St Lawrence River” On June 8th we departed the motel to visit the first lighthouse, the Erie Light 1861

which lays claim to being the first lighthouse on the Great Lakes

Next we stopped at The Tom Ridge Environmental Center



Then to the Presque Isle Lighthouse, (1873) a structure that was needed to warn mariners of the seventeen mile long peninsula jutting out into Lake Erie. Locals dubbed the alternating red and white signal the “Flashlight”. Our next stop was Presque Isle North Pier head (1857) After a cookout lunch in a log cabin at Presque Isle State Park, we proceeded to Barcelona Lighthouse, the first public building in

the United States to be illuminated by natural gas. When viewed from the lake at night, the whole tower represented one complete, constant and unwavering blaze.” Barcelona Lighthouse(1829) is located on a private residence. Next came Dunkirk Lighthouse (1827/1875) located in Dunkirk harbor. This lighthouse has historically served the dual role of aiding Great Lakes navigation and guiding vessels through the difficult approach to the harbor. Dunkirk was my favorite lighthouse of the entire trip; one reason was the museum contained a large selection of USCG memorabilia plus they were restoring a 50 foot buoy tender (name unknown)

that was used to service the coastal buoys of Lake Erie.

On June 9th, after spending the night in Buffalo, we went to Buffalo Inner Harbor (#1 Naval Park Cove) to go on a Buffalo Harbor Lighthouse Cruise. While on this cruise we viewed: Buffalo Main(1838), Buffalo Breakwater(Old Bottle Light)(1903, Buffalo Intake Crib Light(1813) which was originally built to pump fresh water to the city of Buffalo, and Buffalo South Side Light (1903) which had a massive fog horn that was so loud that it was positioned toward the marshland. Our President Angelo would have appreciated that!!

The next stop was Fort Niagara Lighthouse (1872) which was originally built by the French in 1726 to monitor the fur trade out of Great Lakes Basin and Olcott Lighthouse, a non official lighthouse built by the townspeople to guide vessels to their small independent seaport. A reproduction was built in the 1990’s On to Lockport for another needed night’s rest (to continue in Winter “Bay Run”)

2009 New Jersey Lighthouse Challenge 10th Anniversary

October 17th and 19th

See 11 Land Based

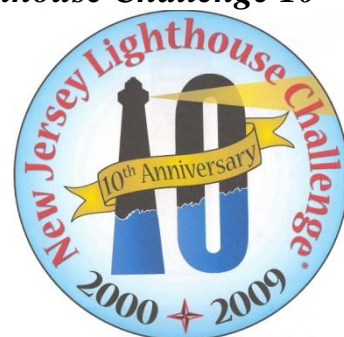
Lighthouses

2 Fresnel Lens sites

Bonus Site: NEW

Ludlum Light Station

Sea Isle City



The Bay Run

PEGGY'S CORNER

By Peggy Stapleford

Activities/Program Chair



BULLITEN BOARD

So many great programs...

OCTOBER 17TH AND 18TH

NJ Lighthouse Challenge

NJLHKFA will have an "Outreach" at Hereford Inlet 9 a.m. til

This gives us a chance to sell a lot of our merchandise. BUT! We need volunteers during the day. If you can spare an hour or so call me at 1-484-947-3191 or Pres. Angelo at 1-609-884-1329. We need your help!

This is also an opportunity to meet many interesting Lighthouse folks who have traveled the 10th Anniversary Lighthouse Challenge

OCTOBER 25TH

OUR DBLHKFA REUNION

and Remembrance Banquet
at the Yacht Club of Sea Isle

Honoring the memories of:

Carole F. Reily and Jim Gowdy

RESERVATIONS To Darlene Rigazio
108 Willow Dr. N. Cape May, NJ 08204
\$30 per person for a really great time
Reservation Form enclosed in Bay Run

JANUARY 23rd 2010

Winter Membership Meeting

With Friends of Ludlam's Beach LHS

Snow Date 1/30/10 Location to come

APRIL 24TH 2010

Spring Membership Meeting

Cape May Point-Cape May Light

DBLHKFA has really terrific Programs that would appeal to anyone interested in Lighthouses or the Delaware River and Bay

GREAT MEMBERS REMEMBERED

Carole F. Reily and Jim Gowdy

We are looking forward to our Annual Reunion Banquet on Sunday October 25th. We will be remembering and honoring our founder and president, Carole F. Reily and Jim Gowdy, the author of Guiding Lights of the Delaware River and Bay.

Carole and Jim were friends, and in turn, friends to all of our membership.

Both "Passed Over the Bar" far too soon and are sorely missed by the entire Lighthouse Community.

At age 18 Carole began her life long battle with rheumatoid arthritis.

Her interest in "Shore things" started in Fortescue where her grandparents owed a home, known as the "Saltbox"

Carole began photographing fishing boats, their captains, passengers and their catches and selling them to the captains and passengers. A captain asked her if she would like to go out on his boat to see the lighthouses on the Bay. Without hesitation she and her camera were ready to sail. From then on she was "Hooked" and began producing postcards. She started a small business known as the "Sandpiper Photos".

In our next Bay Run we will write about the Beginnings of the DBLHKFA and Carole's part in it.

Jim Gowdy was born in Salem and later moved to Sweetwater with his wife Ingrid and their two children.

He worked for the NJ Forest Fire Service as a Forest Fire Warden from 1979 to 2001 when "Passed over the Bar" He and his friend Kim Ruth, researched and published "Guiding Lights of the Delaware River and Bay" in 1999. Jim was also one of the founders of the NJ Lighthouse Society. He also joined the Maurice River Historical Society and aided in getting East Point Lighthouse on the National Historical Register. Jim was instrumental in obtaining \$184,000 grant for the restoration of East Point when he was vice president of the society. Jim had a long battle with a very rare blood disease. He died on November 5th 2001.

The Bay Run

Continue page 4 Aaron Kimmey story

Order lens from Port Penn Rear Lighthouse was to go to Reedy Island Rear Range New. So the lens in the tower at Liston Front Range was the lens that Keeper Kimmey took care of so many years. Ernie Mabrey had his hands on the lens and never knew it.

(Note We also contacted 103 year old Ed Hill whose wife, Alberta was one of the keepers daughters.)



**There were 4 daughters: Vida, Macie, Elizabeth and Alberta. We were unable to get to talk with Mr. Hill who lives in Lewes, DE.)
JUST RUMORS or Could Be Fact?**

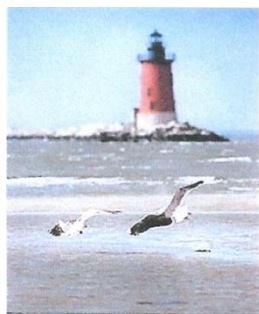
**OLD Reunion Hall Table
for : Boot Camp - 1950s**

David Taylor writes:

I was in India 32 in 1957 and I would love to hear from anyone that remembers me. I retired from CG in 1977

Don Bradford writes:

Was in Cape may, India 41 - October 58 to January 59 - Chief Rose was our commander, any buddy from this class.



The Breakwater Lighthouse, constructed in 1885, marks the entrance to Lewes' harbor, (Sun photo by Glenn Fawcett)

Carole "The Lighthouse Lady's"

List of Past Keepers from the Lighthouses, and Lightships in the Tri-State area.

Our current members include:

Tom Cunningham-Miah Maull, Bill Johnson-Miah Maull & Ship John Shoal, Everett Jones Miah Maull and Lewes Light Boat Station, Bob Lamb Montauk and Stepping Stones Light, Charles Markley Brandywine, Miah Maull and Harbor of Refuge, Ronald McCabe Indian River Life Boat Station and Fenwick Island, Martin Muldowney Ship John Shoal, Raymond Pfaff, Fourteen Foot and Harbor of Refuge, Gaylord ("Dusty") Pierce, Fourteen Foot, Angelo Rigazio, Harbor of Refuge, Fred Ruddick, Ship John Shoal.

We would like to hear from or receive information on the following Lighthouse Keepers from this area.

Alex L.Auther, Ship John Shoal, Carl Ballentine, Miah Maull and Brandywine, Kenneth Bode, Fourteen Foot, Donald Crankshaw, Ship John Shoal, Joseph Engleke, Brandywine, Jeff Feehrer, Brandywine and Miah Maull, Tony Hall, Miah Maull and Five Fathoms Bank,

We will continue listing those Keepers that we would like to hear from or from anyone who can give us input as to their whereabouts.

Contact: Angelo Rigazio

KeeperAng54@yahoo.com or 609-884-1329 or Rod Mulligan at Memaxl@juno. Com or 856-691-8224

Do you have any suggestions for Programs or locations for our Meetings or Outreach locations. Increasing our visibility to the area

The Bay Run

ANNUAL DBLHKFA PICNIC and CRUISE JULY 19th 2009

It was a great family Cruise joined by members from our other South Jersey Lighthouse Groups. Terrific weather, Calm Bay (Pictures courtesy of member Bill Geilfuss)



ROD'S SEAWAY TRAIL LIGHTHOUSE TOUR PICTURES

See; Rod Mulligan's article of Historic Lighthouses on page 5 of this "BAY RUN



These lighthouses are described in Rod's Article on his Seaway Trail Lighthouse Tour

We are looking forward to seeing you at Our Annual Reunion Remembrance Banquet on October 25th at Sea Isle Yacht Club
REGISTRATION FORM INSERTED IN THIS "Bay Run"